



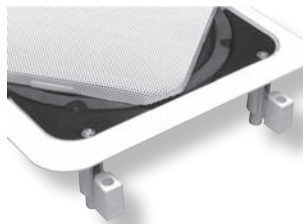
CMS20T

Technical Specifications

- Type : 2 - Way HiFi
- Woofer : 6.5" Enforced Polypropylen
- Tweeter : 1" Silk Dome
- Rated Power RMS : 20 W / 100Volt
- Music Power RMS : 32 W / 100Volt
- Rated Power RMS : 40 W / 16Ω
- Music Power RMS : 60 W / 16Ω
- Sound Pres. Level (SPL) 1w/1m : 92dB
- Frequency range : 60 Hz - 20 kHz
- Trafo Power Tappings : 20 - 10 - 5 - 2.5W
- Dispersion @ 1-4-8 KHz : 180° - 80° - 45°
- Dimensions outside(HxW) : 201 x 201MM
- Dimensions Cutout(HxW) : 176 x 176MM
- Depth : 75MM
- Weight : 1.65Kg

The APart CMS20T 2-way square built-in loudspeaker is loved by every interior designer for its beautiful shape and perfect sound quality. It can be used as a 16 Ohm or 100 Volt loudspeaker. In 16 Ohm use, you can connect up to 4 loudspeakers in parallel on each channel of a standard 4 Ohm amplifier. For 100 use, the CMS20T is equipped with a high-quality 20 watt 100 Volt transformer with several power tapings. The loudspeaker has a 6 1/2" woofer and 1" tweeter. It makes the CMS20T very suitable for the distribution of microphone calls and Back Ground Music.

Mounting the loudspeaker



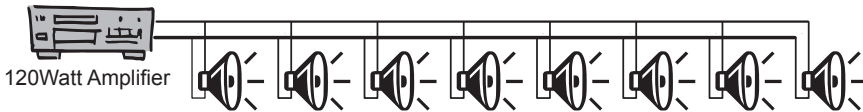
Cutout (HxW) : 176 x 176MM
 Remove the grill before mounting. You can see four Philips head screws. Use these screws to thighten the dog-ears.

Power Tappings

COLOUR	KLEUR	COULEUR	POWER	IMPEDANCE
Black	Zwart	Noir	Common	
RED	ROOD	ROUGE	2.5 Watt	4KΩ
GREEN	GROEN	VERT	5 Watt	2KΩ
YELLOW	GEEL	JAUNE	10 Watt	1KΩ
BROWN	BRUIN	BRUN	20 Watt	500R

100 Volt Technology

$$70 \text{ Watt} = 20 + 20 + 10 + 5 + 5 + 5 + 2.5 + 2.5$$



Amplifier power must be higher than total power of all speakers.

Het versterkervermogen moet hoger zijn dan de som van de vermogens van de luidsprekers.

La puissance de l'amplificateur doit être plus élevée que la puissance totale des haut parleurs.

16 ohm Technology

