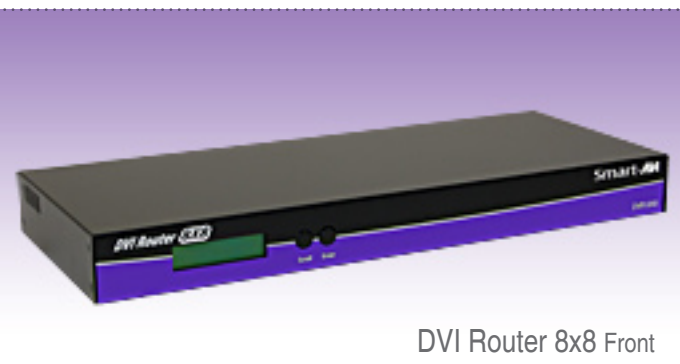


Display Content From Any 8 Computers On Any 8 Screens Independently



DVI Router 8x8 Front



DVI Router 8x8 Back

Our non-blocking digital video matrix switch provides an easy and dynamic approach to creating multiple computer stations, each having the ability to access any one of the CPUs or displays instantly, either directly or remotely using RS-232 commands, IR or Ethernet.

The SmartAVI DVI Router 8 x 8 provides single-link, DVI-D operation at the maximum TMDS rate of 2 x 1.65 Gbps at resolutions up to 1920 x 1200. The DVI signals can be transmitted through 20 feet of copper at the maximum TMDS rate on both the input and output sides of the switch.

Technical Specifications

Video	
Video Amplifier Bandwidth	165 MHz
Input Video Signal	1.2 volts p-p
Input DCC Signal	5 volts p-p (TTL)
Single-link Range	1080p/ 1920 x 1200
DVI Connector	DVI-D 29-pin female
Control	
Serial Controls	Optional IR control
Power	
Power Supply	5VDC-5A
Physical	
Dimensions	(17"x6.75"x1.70")
Weight	(8.25 LBS)

Ordering Information

DVR8X8S DVI-D 8x8 Router.
Includes: [DVR8X8 & (PS5VD5A)]

DVI Router 8x8

8-Port DVI Matrix Switch

Display Content From Any 8 Computers On
Any 8 Screens Independently Up To 20 Feet Away

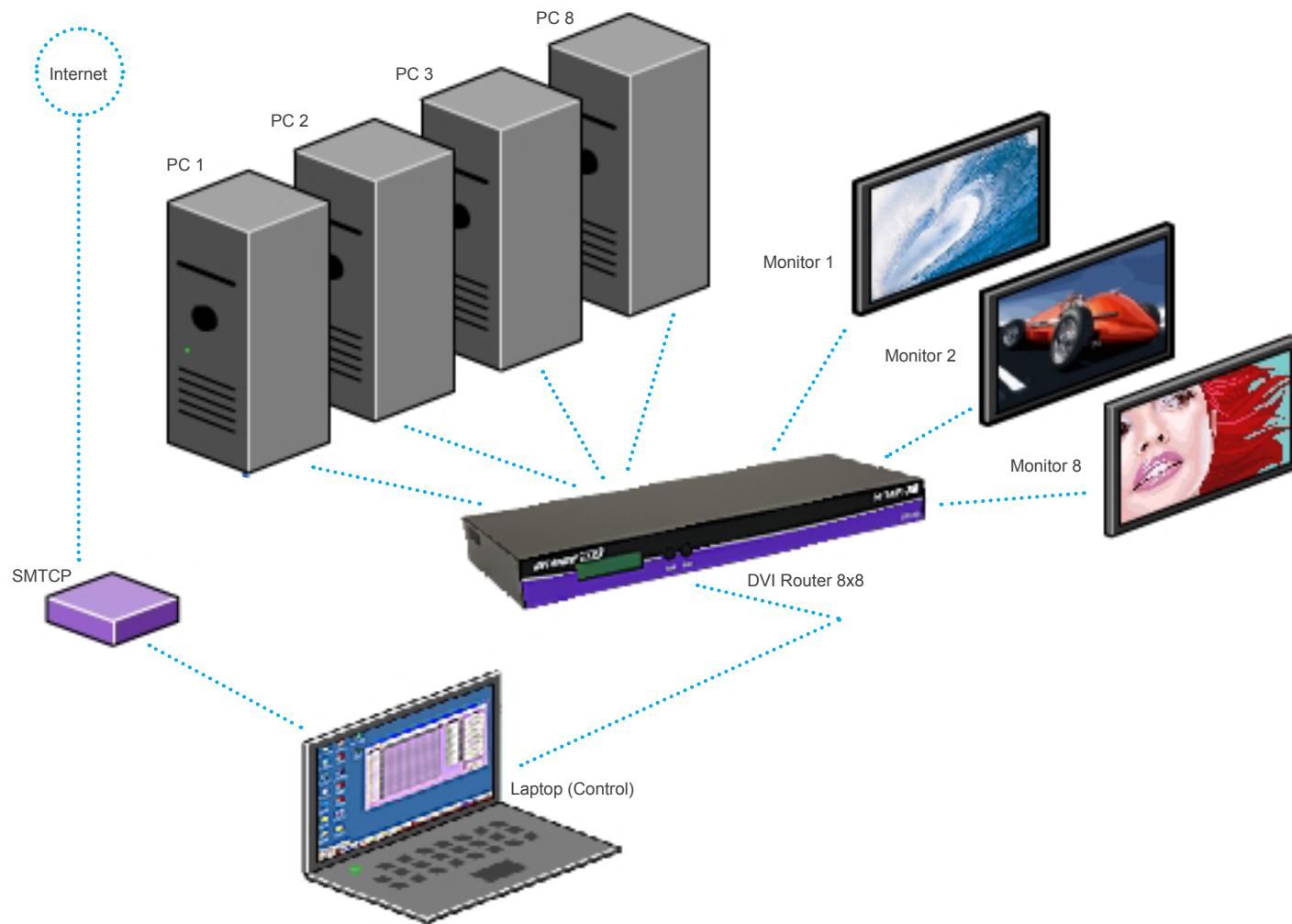


SmartAVI's non-blocking digital video matrix switch provides an easy and dynamic approach to creating up to 8 computer stations, each with the ability of accessing any one of the CPUs or displays instantly either directly or remotely, using RS-232 commands, Ethernet and/or IR input. Our DVI router is controlled by Windows®-based software that is easy to understand and simple to use – a cornerstone of all SmartAVI products.

Features

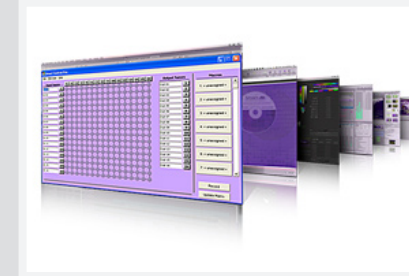
- Increases productivity by providing access to up to 8 computers from 8 workstations
- 8 x 8 non-blocking, single-link DVI-D matrix switch
- Adjustable output pre-emphasis and drive level
- Supports DVI operation at the maximum TMDS rate of 2 x 1.65 Gbps
- Supports resolutions up to 1080p, 2k, and 1920 x 1200
- Control from either front panel or RS-232
- Available IR remote
- Ethernet control available
- Easy-to-use Windows®-based software

Diagram Applications



Applications

- Wall Displays
- Digital Media
- Airports
- Dealer Rooms
- Control Rooms
- Audio/Visual Presentations
- Shopping Centers
- Security
- Point-of-Sale
- Hotels/Resorts



OVERVIEW: The DVI Router 8 x 8 is a high-quality switching matrix for up to 8 computer/display signals. This allows an easy and dynamic approach to displaying content from any 8 computers on any 8 screens independently up to 20 feet away.



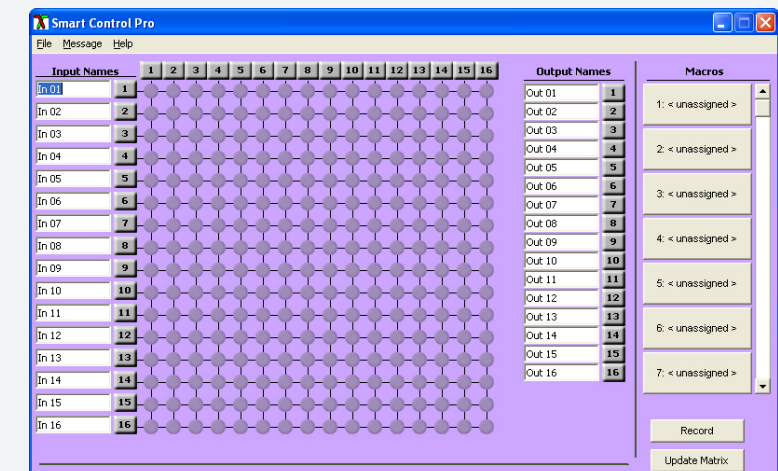
CONTROL: The SmartAVI DVI Router 8 x 8 can be controlled from the front panel via keypad and LCD, allowing users to see which inputs are connected to which outputs.

SmartAVI's Windows®-based software (SmartControl) allows for simple user interface when controlling the DVI Router.

Additional optional control methods available for the DVI Router are IR and Ethernet.



SOFTWARE: SmartAVI's DVI Router 8 x 8 hardware comes with the easy-to-use, Windows®-based SmartControl software application that makes user interface simple.



Using SmartControl, you can assign a unique name to each port on the DVI Router, customizing projects to your liking and needs.